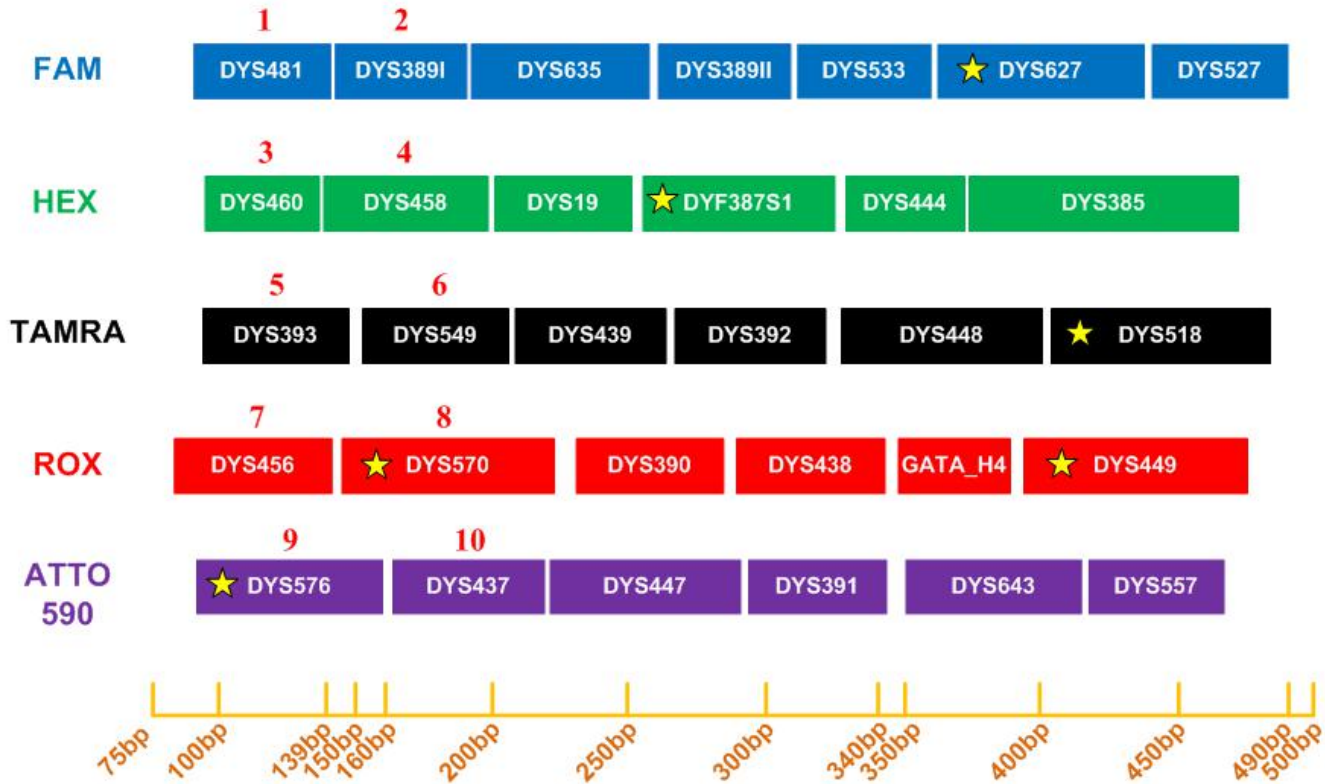


Brief Introduction of Y34SE STR Detection Kit

1. Loci Arrangement Diagram of Y34SE STR Detection Kit



★ Rapid mutant Y-STR locus

1-10 <220bp, Mini-Y-STR locus

2. Features of Y34SE STR Detection Kit

1. **Six-color** fluorescence detection platform, which can carry out multiple amplification on **34** Y-STR loci simultaneously including 27 low mutant loci (mutant rate less than 1%) and **7 rapid mutant loci** (mutant rate higher than 1%).
2. Y-STR **database construction**, suitable for **male family investigation**, featuring a strong **individual recognition ability**. The kit contains all mainstream loci in Y-STR database (including all the loci of Yfiler®Plus and PowerPlex®Y23).
3. Y34SE contains **10 mini-STR** (amplifying length under 220bp), which can acquire more information from DNA degraded samples.
4. **Strong compatibility**, compatible with the direct amplification of various samples and the amplification of purified DNA.
5. Rapid amplification, **the whole process is 70min theoretically**.

3. Comparison of Y34SE and Similar Products

Low Mutant Y-STR Loci (mutant rate less than 1%)

Rapid Mutant Y-STR Loci (mutant rate higher than 1%)

	Applied Biosystems Yfiler® Plus	Promega PowerPlex® Y23	沿溯 Y34SE
DYS19			
DYS385			
DYS389I/II			
DYS390			
DYS391			
DYS392			
DYS393			
DYS437			
DYS438			
DYS439			
DYS456			
DYS458			
DYS448			
DYS635			
Y_GATA_H4			
DYS481			
DYS533			
DYS460			
DYS549			
DYS643			
DYS527			
DYS444			
DYS447			
DYS557			
DYS576			
DYS570			
DYS449			
DYS627			
DYS518			
DYF387S1			

- Y-STR database construction, male family investigation
- Identification of male relatives
- **The selected loci conform to the latest Y-STR standards**

4.1 Components and Contents of Y34SE STR Detection Kit

Components of PCR Amplification Kit	100 Reactions (Y series)
2.5× PCR Mix	1000μL× 1
5× Primers	500μL× 1
PCR Grade Water	1000μL× 1
Control DNA 9948 (0.5ng/μL)	20μL× 1
Control DNA 9947A (0.5ng/μL)	20μL× 1
Taq DNA Polymerase	100μL× 1

Components of PCR Detection Kit	100 Reactions (Y series)
Allelic Ladder	25μL× 1
Orange-500	120μL× 1

Components of Matrix Kit	Free of charge for the first time
6 Dye Matrix	50μL× 1

4.2 Reaction System of Y34SE STR Detection Kit

Component	25 μ L System	10 μ L System
2.5 \times PCR Mix	10.0	4.0
5 \times Primers	5.0	2.0
PCR Grade Water	8.0	2.6
Control DNA 9948 (0.5ng/ μ L)	1.0	1.0
Taq DNA Polymerase	1.0	0.4
Total Volume	25.0	10.0

Note: Customers are not recommended to adopt reaction systems under 10 μ l.

4.3 Reaction System and Procedures of Y34SE STR Detection Kit

Y34SE

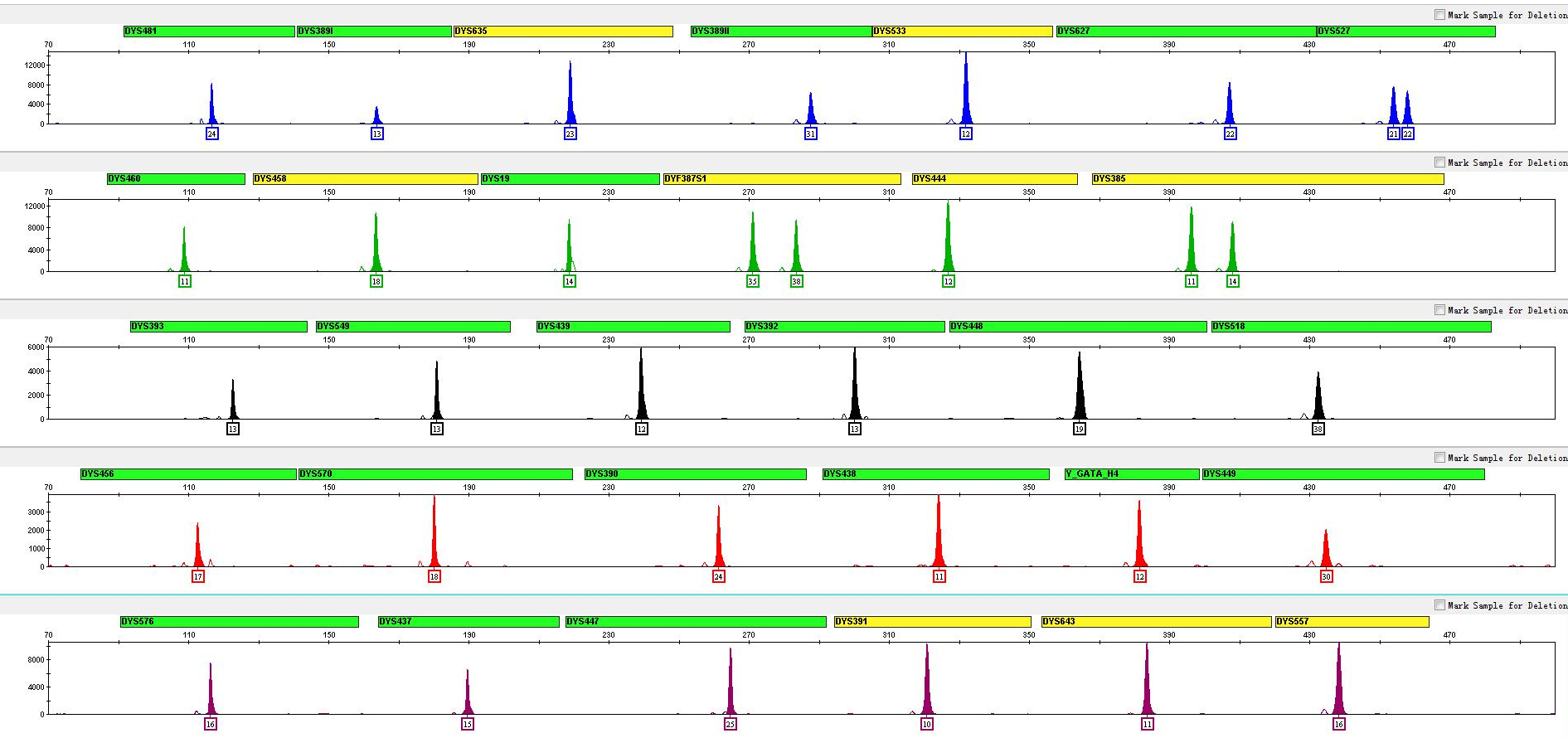
29 Cycles {
95°C/2m
94°C/10s
59°C/1.5m
60°C/20m

Reaction Time: ~ **70min**

*The number of cycles may vary in accordance with the specific conditions of the laboratory.

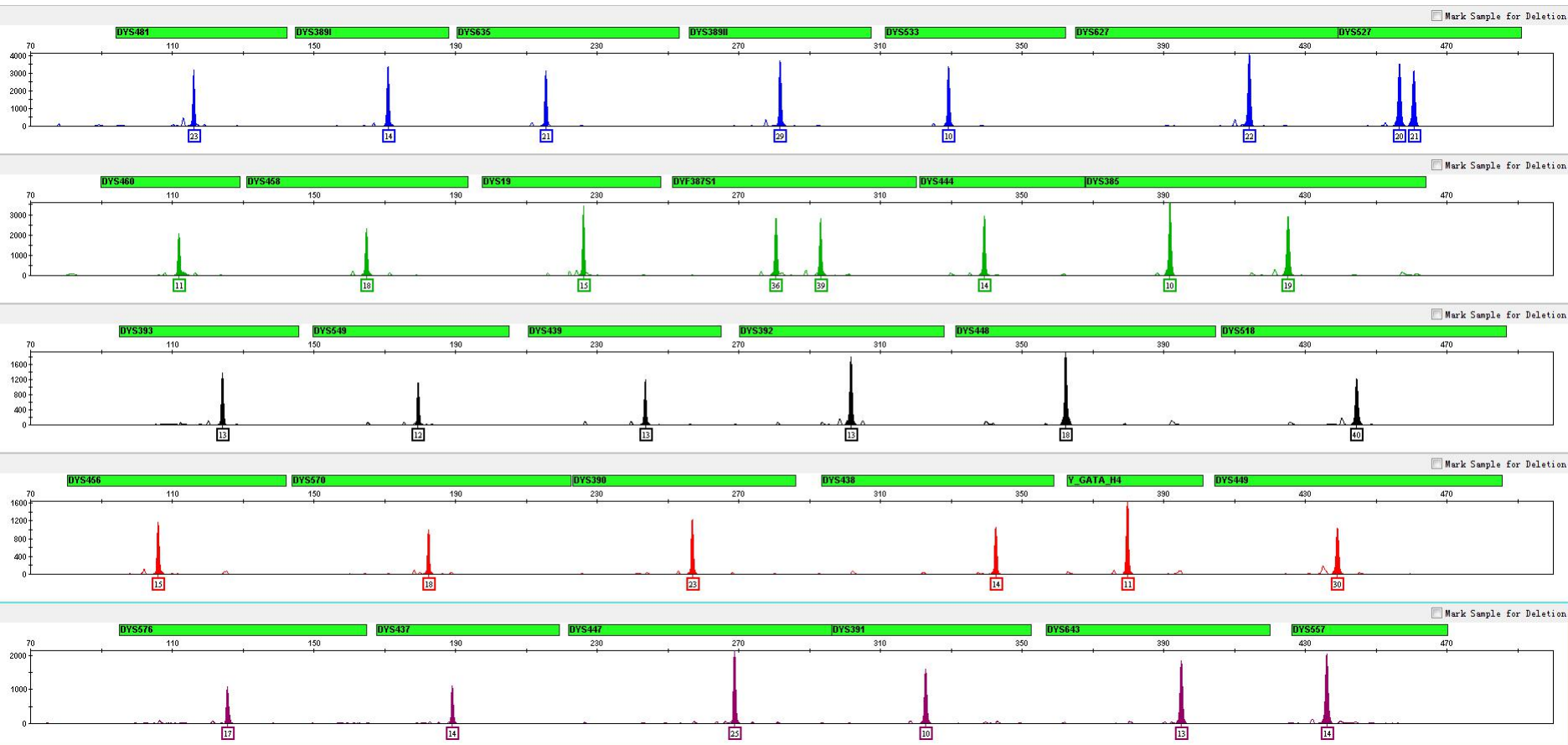
5. Detection Results of Y34SE STR Detection Kit

Positive Control Sample 9948



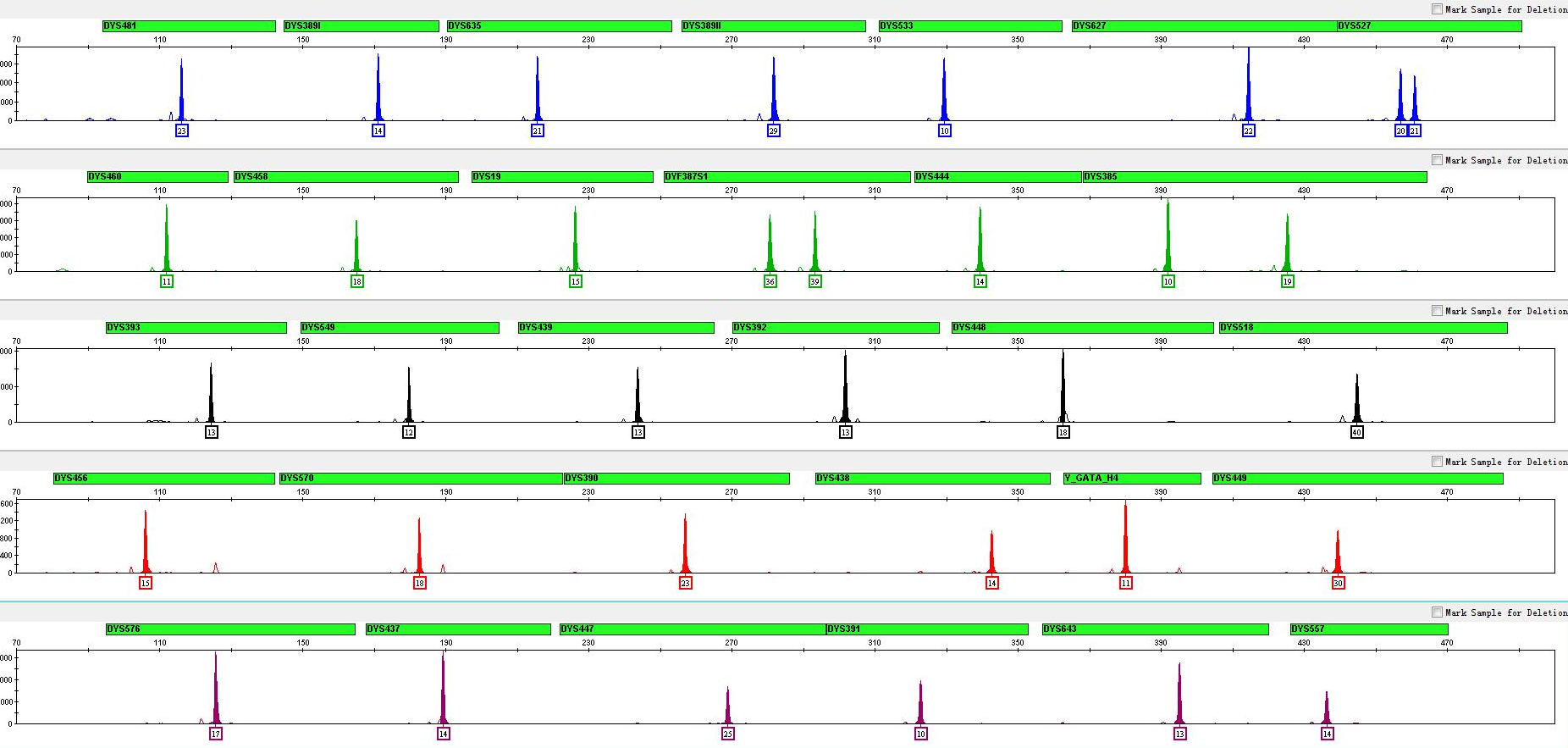
5. Detection Results of Y34SE

FTA Blood Card Sample



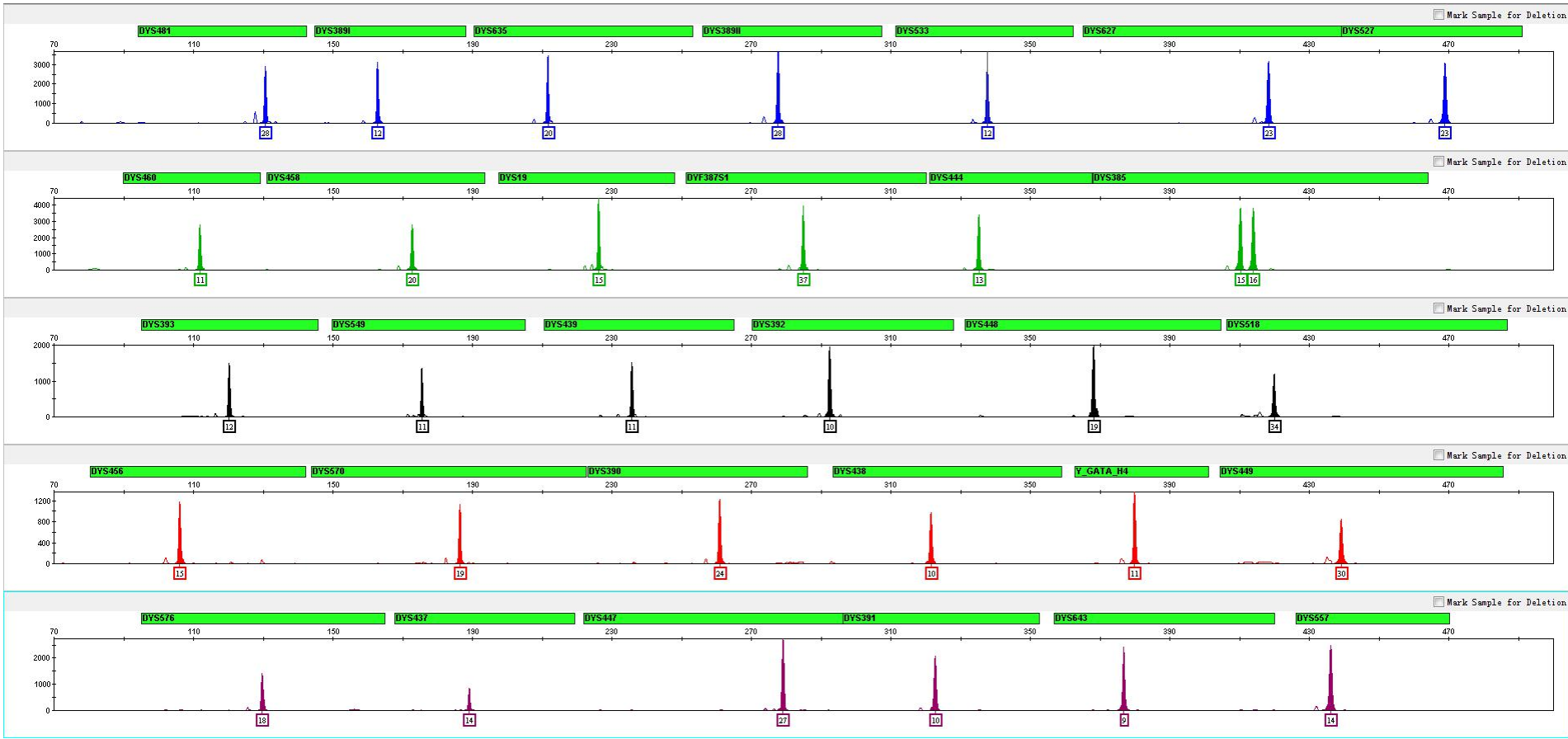
5. Detection Results of Y34SE STR Detection Kit

Blood on Filter Paper



5. Detection Results of Y34SE STR Detection Kit

FTA Saliva Card Sample



WE ARE JUST ON THE WAY
THANK YOU.



Contact Us

Website: <http://www.dnatechlab.com/>



江苏苏博生物医学科技南京有限公司